

# Master Flash® Part Number Key & Product Information

35 Year Master Flash®



Name	Part #	Compound	Pipe Range	Base
Mini	ICC-SQ051BX	Black EPDM	1/8" - 3/4" (3 - 19mm)	2 -1/4" (57mm)
#1	ICC-SQ101BX	Black EPDM	1/4" - 2-3/4" (6 - 70mm)	4-1/2" (114mm)
#2	ICC-SQ201BX	Black EPDM	7/8" - 4" (22 - 101mm)	6" (152mm)
#3	ICC-SQ301BX	Black EPDM	1/4" - 5-3/4" (6 - 146mm)	8" (203mm)
#4	ICC-SQ401BX	Black EPDM	2-3/4" - 7" (70 - 177mm)	10" (254mm)
#5	ICC-SQ501BX	Black EPDM	4" - 8-1/4" (101 - 209mm)	11" (279mm)
#6	ICC-SQ601BX	Black EPDM	4-3/4" - 10" (121 - 254mm)	12" (304mm)
#7	ICC-SQ701BX	Black EPDM	5-1/2" - 11-1/2" (140 - 292mm)	14" (355mm)
#8	ICC-SQ801BX	Black EPDM	6-3/4" - 13-1/2" (171 - 343mm)	17" (431mm)
#8X-C	ICC-SQ801BXC	Black EPDM	Closed Top 0" - 15" (0 - 381mm)	19-1/2" (495mm)
#8X-O	ICC-SQ801BX0	Black EPDM	Open Top 6-3/4" - 15" (171 - 381mm)	19-1/2" (495mm)
#9X	ICC-SQ901BXM	Black EPDM	8" - 20-1/2" (203 - 520mm)	25" (635mm)
Maxi Closed	ICC-SQ951BX-C	Black EPDM	Closed Top 0" - 28-1/2" (0 - 724mm)	34" (863mm)
Maxi Open	ICC-SQ951BX-O	Black EPDM	Open Top 12" - 28-1/2" (304 - 724mm)	34" (863mm)

**PART NUMBER KEY**

Base	Size	Color
SQ	Mini	BA
SQ	051	BA

**SILICONE PART NUMBER KEY**

Base	Size	Color
SQ	#1	RA
SQ	102	RA

**Color Options**  
 BN-Brown • WT-White • GA-Gray  
 BA-Black • DG-Dark Green  
 LG-Light Green • DB-Dark Blue  
 LB-Light Blue • BR-Bright Red  
 TC-Terra Cotta

**Silicone Color Options**  
 RA-Red High Temp Silicone  
 GX-Gray High Temp Silicone

Legend: BN-Brown BA-Black GA-Gray WT-White DG-Dark Green LG-Light Green DB-Dark Blue LB-Light Blue BR-Bright Red TC-Terra Cotta

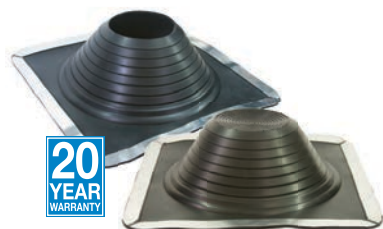
Standard (Square Base) Master Flash®



Name	Part #	Compound	Pipe Range	Base
Mini	SQ051BA	Black EPDM	1/8" - 3/4" (3 - 19mm)	2 -1/4" (57mm)
#1	SQ101BA	Black EPDM	1/4" - 2-3/4" (6 - 70mm)	4-1/2" (114mm)
#2	SQ201BA	Black EPDM	7/8" - 4" (22 - 101mm)	6" (152mm)
#3	SQ301BA	Black EPDM	1/4" - 5-3/4" (6 - 146mm)	8" (203mm)
#4	SQ401BA	Black EPDM	2-3/4" - 7" (70 - 177mm)	10" (254mm)
#5	SQ501BA	Black EPDM	4" - 8-1/4" (101 - 209mm)	11" (279mm)
#6	SQ601BA	Black EPDM	4-3/4" - 10" (121 - 254mm)	12" (304mm)
#7	SQ701BA	Black EPDM	5-1/2" - 11-1/2" (140 - 292mm)	14" (355mm)
#8	SQ801BA	Black EPDM	6-3/4" - 13-1/2" (171 - 343mm)	17" (431mm)
#8X-C	FF851BAC	Black EPDM	Closed Top 0" - 15" (0 - 381mm)	19-1/2" (495mm)
#9X	SQ901BX	Black EPDM	8" - 20-1/2" (203 - 520mm)	25" (635mm)
Maxi Closed	SQ951BA-C	Black EPDM	Closed Top 0" - 28-1/2" (0 - 724mm)	34" (863mm)
Maxi Open	SQ951BA-O	Black EPDM	Open Top 12" - 28-1/2" (304 - 724mm)	34" (863mm)

## Master Flash® Part Number Key & Product Information

### Fix-A-Flash Master Flash®



Name	Part #	Compound	Pipe Range	Base
Fix-A-Flash Closed	FF851BC	Black EPDM	Closed Top 0" - 15" (0 - 381mm)	19-1/2" (495mm)
Fix-A-Flash Closed	FF851GC	Gray EPDM	Closed Top 0" - 15" (0 - 381mm)	19-1/2" (495mm)
Fix-A-Flash Closed	FF852RC	Red Silicone	Closed Top 0" - 15" (0 - 381mm)	19-1/2" (495mm)
Fix-A-Flash Open	FF851BO	Black EPDM	Open Top 6-3/4" - 15" (171 - 381mm)	19-1/2" (495mm)
Fix-A-Flash Open	FF851GO	Gray EPDM	Open Top 6-3/4" - 15" (171 - 381mm)	19-1/2" (495mm)
Fix-A-Flash Open	FF852RO	Red Silicone	Open Top 6-3/4" - 15" (171 - 381mm)	19-1/2" (495mm)

### Extreme Angle Master Flash®



Name	Part #	Compound	Pipe Range	Base
#1	EA101BA	Black EPDM	Closed Top 1/4" - 5-3/4" (6 - 146mm)	11" (279mm)
	EA102RA	Red Silicone	Closed Top 1/4" - 5-3/4" (6 - 146mm)	11" (279mm)
	EA102GX	Gray Silicone	Closed Top 1/4" - 5-3/4" (6 - 146mm)	11" (279mm)
#2	EA201BA	Black EPDM	4" - 8" (101 - 203mm)	14-1/4" (362mm)
	EA202RA	Red Silicone	4" - 8" (101 - 203mm)	14-1/4" (362mm)
	EA202GX	Gray Silicone	4" - 8" (101 - 203mm)	14-1/4" (362mm)

### Multi-Port Master Flash®



Name	Part #	Compound	Pipe Range	Port	Base
Multi Port	MP101BA-G	Black EPDM	Standard 1/4" - 2-3/4" (6 - 70mm) Retrofit 1-1/4" - 2-1/4" (25 - 57mm)	1/4" (6mm) or 3/8" (9.6mm)	4-1/2" (114mm)
	MP102GX-G	Gray Silicone	Standard 1/4" - 2-3/4" (6 - 70mm) Retrofit 1-1/4" - 2-1/4" (25 - 57mm)	1/4" (6mm) or 3/8" (9.6mm)	4-1/2" (114mm)

### Multi-Flash Master Flash®



Name	Part #	Compound	Pipe Range	Base
#2	MF201BA-G	Black EPDM	Standard 7/8" - 4" (22 - 101mm) Retrofit 1/2" - 3-1/2" (12 - 89mm)	6" (152mm)
	MF202GX-G	Gray Silicone	Standard 7/8" - 4" (22 - 101mm) Retrofit 1/2" - 3-1/2" (12 - 89mm)	6" (152mm)
#3	MF301BA-G	Black EPDM	Standard 1/4" - 5-3/4" (6 - 146mm) Retrofit 2" - 4-1/2" (50 - 114mm)	8" (203mm)
	MF302GX-G	Gray Silicone	Standard 1/4" - 5-3/4" (6 - 146mm) Retrofit 2" - 4-1/2" (50 - 114mm)	8" (203mm)
#4	MF401BA-G	Black EPDM	Standard 2-3/4" - 7" (70 - 177mm) Retrofit 2-1/4" - 6-1/2" (57 - 165mm)	10" (254mm)
	MF402GX-G	Gray Silicone	Standard 2-3/4" - 7" (70 - 177mm) Retrofit 2-1/4" - 6-1/2" (57 - 165mm)	10" (254mm)
#5	MF501BA-G	Black EPDM	Standard 4" - 8-1/4" (101 - 209mm) Retrofit 3-1/2" - 6-3/4" (90 - 171mm)	11" (279mm)
	MF502GX-G	Gray Silicone	Standard 4" - 8-1/4" (101 - 209mm) Retrofit 3-1/2" - 6-3/4" (90 - 171mm)	11" (279mm)
#6	MF601BA-G	Black EPDM	Standard 4-3/4" - 10" (121 - 254mm) Retrofit 4-1/4" - 9-1/2" (108 - 241mm)	12" (304mm)
	MF602GX-G	Gray Silicone	Standard 4-3/4" - 10" (121 - 254mm) Retrofit 4-1/4" - 9-1/2" (108 - 241mm)	12" (304mm)
#7	MF701BA-G	Black EPDM	Standard 5-1/2" - 11-1/2" (140 - 292mm) Retrofit 5" - 11" (127 - 279mm)	14" (355mm)
	MF702GX-G	Gray Silicone	Standard 5-1/2" - 11-1/2" (140 - 292mm) Retrofit 5" - 11" (127 - 279mm)	14" (355mm)
#8	MF801BA-G	Black EPDM	Standard 6-3/4" - 13-1/2" (171 - 343mm) Retrofit 6-1/2" - 12" (165 - 304mm)	17" (431mm)
	MF802GX-G	Gray Silicone	Standard 6-3/4" - 13-1/2" (171 - 343mm) Retrofit 6-1/2" - 12" (165 - 304mm)	17" (431mm)
#9	MF901BA-G	Black EPDM	Standard 9-1/2" - 20-1/2" (241 - 520mm) Retrofit 9" - 20" (228 - 508mm)	25" (635mm)
	MF902GX-G	Gray Silicone	Standard 9-1/2" - 20-1/2" (241 - 520mm) Retrofit 9" - 20" (228 - 508mm)	25" (635mm)
Maxi	MF951BA-G	Black EPDM	Standard 12" - 28-1/2" (305 - 724mm) Retrofit 13" - 27" (330 - 685mm)	34" (863mm)
	MF952GX-G	Gray Silicone	Standard 12" - 28-1/2" (305 - 724mm) Retrofit 13" - 27" (330 - 685mm)	34" (863mm)

# Master Flash® Part Number Key & Product Information

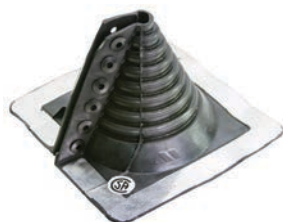
## Mini-Port Master Flash®



	Name	Part #	Compound	Pipe Range	Port	Base
Mini Port	MP051BA		Black EPDM	0" - 13/16" (0 - 20mm)	1/4" - 3/8" (6 - 9.6mm)	3" (76mm)
	MP051GA		Gray EPDM	0" - 13/16" (0 - 20mm)	1/4" - 3/8" (6 - 9.6mm)	3" (76mm)
	MP052GX		Gray Silicone	0" - 13/16" (0 - 20mm)	1/4" - 3/8" (6 - 9.6mm)	3" (76mm)



## Retrofit Standard (Square Base) Master Flash®



	Name	Part #	Compound	Pipe Range	Base
#1	RF101BP		Black EPDM	1/2" - 4" (12 - 101mm)	8-3/16" (205mm)
	RF101GP		Gray EPDM	1/2" - 4" (12 - 101mm)	8-3/16" (205mm)
	RF102RS		Red Silicone	1/2" - 4" (12 - 101mm)	8-3/16" (205mm)
	RF102GX		Gray Silicone	1/2" - 4" (12 - 101mm)	8-3/16" (205mm)
#2	RF201BP		Black EPDM	4" - 9-1/4" (101 - 235mm)	14-1/4" (362mm)
	RF201GP		Gray EPDM	4" - 9-1/4" (101 - 235mm)	14-1/4" (362mm)
	RF202RS		Red Silicone	4" - 9-1/4" (101 - 235mm)	14-1/4" (362mm)
	RF202GX		Gray Silicone	4" - 9-1/4" (101 - 235mm)	14-1/4" (362mm)
#3	RF301BP		Black EPDM	9-1/4" - 16-1/4" (235 - 412mm)	21-1/2" (546mm)
	RF301GP		Gray EPDM	9-1/4" - 16-1/4" (235 - 412mm)	21-1/2" (546mm)
	RF302RS		Red Silicone	9-1/4" - 16-1/4" (235 - 412mm)	21-1/2" (546mm)
	RF302GX		Gray Silicone	9-1/4" - 16-1/4" (235 - 412mm)	21-1/2" (546mm)

## Solar Multi Port-CT (Clay Tile) Master Flash®



	Name	Part #	Compound	Pipe Range	Port	Port	Base
Multi Port-CT	SMP-CT101BA		Black EPDM	0" - 1-15/16" (0 - 49mm)	3/8" (9mm)	3/4" (20mm)	4-1/2" (114mm)
	SMP-CT101TC		Terra Cotta EPDM	0" - 1-15/16" (0 - 49mm)	3/8" (9mm)	3/4" (20mm)	4-1/2" (114mm)
	SMP-CT102RA		Red Silicone	0" - 1-15/16" (0 - 49mm)	3/8" (9mm)	3/4" (20mm)	4-1/2" (114mm)

## Solar Multi Port-MR (Metal Roof) Master Flash®



	Name	Part #	Compound	Pipe Range	Port	Port	Base
Multi Port-MR	SMP-MR101BA		Black EPDM	0" - 1-15/16" (0 - 49mm)	3/8" (9mm)	3/4" (20mm)	4-1/2" (114mm)
	SMP-MR102RA		Red Silicone	0" - 1-15/16" (0 - 49mm)	3/8" (9mm)	3/4" (20mm)	4-1/2" (114mm)
	SMP-MR102RA		Red Silicone	0" - 1-15/16" (0 - 49mm)	3/8" (9mm)	3/4" (20mm)	4-1/2" (114mm)
	SMP-MR102GX		Gray Silicone	0" - 1-15/16" (0 - 49mm)	3/8" (9mm)	3/4" (20mm)	4-1/2" (114mm)

# Master Flash® Part Number Key & Product Information

**Square Vent  
(Retrofit Square Base)  
Master Flash®**



Name	Part #	Compound	Pipe Range	Base
#1	RF101BP-SQ	Black EPDM	2-1/2" - 4" (63 - 101mm)	8" (203mm)
#2	RF201BP-SQ	Black EPDM	2-1/4" - 5" (57 - 127mm)	16-3/4" (400mm)

**Multi-Flash Square Vent  
(Square Base) Master Flash®**



Name	Part #	Compound	Pipe Range	Base
#1	MFSQ101BA	Black EPDM	Standard 3/4" - 5" (19 - 127mm) Retrofit 1-1/2" - 4" (38 - 101mm)	8" (203mm)
	MFSQ102RA	Red Silicone	Standard 3/4" - 5" (19 - 127mm) Retrofit 1-1/2" - 4" (38 - 101mm)	8" (203mm)
#2	MFSQ201BA	Black EPDM	Standard 1" - 10" (25 - 254mm) Retrofit 13/16" - 8-1/2" (20.6 - 215mm)	16-3/4" (425mm)
	MFSQ202RA	Red Silicone	Standard 1" - 10" (25 - 254mm) Retrofit 13/16" - 8-1/2" (20.6 - 215mm)	16-3/4" (425mm)
#3	MFSQ301BA	Black EPDM	Standard 2" - 19-1/4" (50 - 488mm) Retrofit 1-3/4" - 16" (44 - 406mm)	24-3/4" (628mm)
	MFSQ302RA	Red Silicone	Standard 2" - 19-1/4" (50 - 488mm) Retrofit 1-3/4" - 16" (44 - 406mm)	24-3/4" (628mm)

### PART NUMBER KEY

Base Size Color

RD Mini BE  
RD 051 BE

### Color Options

BN-Brown • DG-Dark Gray • GG-Gray  
BE-Black • WT-White • NG-Dark Green  
LG-Light Green • DB-Dark Blue • LB-Light Blue  
BR-Bright Red • TC-Terra Cotta  
CP-Copper • TN-Tan

### SILICONE PART NUMBER KEY

Base Size Color

RD 102 RA  
RD 102 RA

### Silicone Color Options

RA-Red High Temp Silicone  
GX- Gray High Temp Silicone  
BX-Black HighTemp Silicone

BN-Brown BE-Black NG-Dark Gray GG-Gray WT-White DG-Dark Green LG-Light Green DB-Dark Blue LB-Light Blue BR-Bright Red TC-Terra Cotta CP-Copper TN-Tan

**Universal (Round Base)  
Black Master Flash®**



Name	Part #	Compound	Pipe Range	Base
Mini	RD051BE	Black EPDM	1/8" - 3/4" (3 - 19mm)	4" (101mm)
#1	RD101BE	Black EPDM	1/4" - 2-1/2" (6 - 63mm)	4-3/4" (120mm)
#2	RD201BE	Black EPDM	1-3/4" - 3" (44 - 76mm)	6-1/4" (159mm)
#3	RD301BE	Black EPDM	1/4" - 5" (6 - 127mm)	7-3/4" (196mm)
#4	RD401BE	Black EPDM	3" - 6-1/4" (76 - 158mm)	9-1/4" (234mm)
#5	RD501BE	Black EPDM	4-1/4" - 7-3/4" (107 - 228mm)	10-1/2" (266mm)
#6	RD601BE	Black EPDM	5" - 9" (127 - 228mm)	13" (330mm)
#7	RD701BE	Black EPDM	6" - 11" (152 - 279mm)	14-1/2" (368mm)
#8	RD801BE	Black EPDM	7" - 13" (177 - 330mm)	16-1/2" (412mm)
#9	RD901BE	Black EPDM	9" - 19" (228 - 482mm)	25-1/4" (641mm)

**Master Flash® Part Number Key & Product Information**

**Solar Flash  
Master Flash®**



	Name	Part #	Compound	Pipe Range	Base
Solar Flash	SF101BA		Black EPDM	3/4" - 1" (19 - 25mm)	4" (101mm)
	SF102RA		Red Silicone	3/4" - 1" (19 - 25mm)	4" (101mm)
	SF102GX		Gray Silicone	3/4" - 1" (19 - 25mm)	4" (101mm)

**Retrofit Universal  
(Round Base) Master Flash®**



	Name	Part #	Compound	Pipe Range	Base
#1	RF101BS-RD		Black EPDM	3/4" - 2-3/4" (19 - 70mm)	6-1/4" (158mm)
	RF101GS-RD		Gray EPDM	3/4" - 2-3/4" (19 - 70mm)	6-1/4" (158mm)
	RF101NG-RD		Dark Gray EPDM	3/4" - 2-3/4" (19 - 70mm)	6-1/4" (158mm)
	RF102RS-RD		Red Silicone	3/4" - 2-3/4" (19 - 70mm)	6-1/4" (158mm)
	RF102GX-RD		Gray Silicone	3/4" - 2-3/4" (19 - 70mm)	6-1/4" (158mm)
#2	RF201BS-RD		Black EPDM	2" - 7-1/4" (50 - 184mm)	10-3/4" (273mm)
	RF201GS-RD		Gray EPDM	2" - 7-1/4" (50 - 184mm)	10-3/4" (273mm)
	RF201NG-RD		Dark Gray EPDM	2" - 7-1/4" (50 - 184mm)	10-3/4" (273mm)
	RF202RS-RD		Red Silicone	2" - 7-1/4" (50 - 184mm)	10-3/4" (273mm)
	RF202GX-RD		Gray Silicone	2" - 7-1/4" (50 - 184mm)	10-3/4" (273mm)
#3	RF301BS-RD		Black EPDM	3-1/4" - 10" (95 - 254mm)	14-1/2" (368mm)
	RF301GS-RD		Gray EPDM	3-1/4" - 10" (95 - 254mm)	14-1/2" (368mm)
	RF301NG-RD		Dark Gray EPDM	3-1/4" - 10" (95 - 254mm)	14-1/2" (368mm)
	RF302RS-RD		Red Silicone	3-1/4" - 10" (95 - 254mm)	14-1/2" (368mm)
	RF302GX-RD		Gray Silicone	3-1/4" - 10" (95 - 254mm)	14-1/2" (368mm)

**Electrical  
Mast Connection  
(EMC) Master Flash®**



	Name	Part #	Compound	Pipe Range	Base
Electrical Mast Connection	EMC101BS		Black EPDM	0" - 5-3/8" (0 - 136mm)	15" (381mm)
	EMC102RS		Red Silicone	0" - 5-3/8" (0 - 136mm)	15" (381mm)
	EMC102GX		Gray Silicone	0" - 5-3/8" (0 - 136mm)	15" (381mm)

**Box Gutter  
Expansion Joint  
Master Flash®**



	Name	Part #	Compound	Width	Length
Box Gutter Expansion Joint	LF067G9-12		Gray EPDM	9" (228mm)	12' (3.6m)
	LF067G9-33		Gray EPDM	9" (228mm)	33' (10m)
	LF067G9-50		Gray EPDM	9" (228mm)	50' (15m)
	LF067G12-12		Gray EPDM	12" (304mm)	12' (3.6m)
	LF067G12-33		Gray EPDM	12" (304mm)	33' (10m)
	LF067G12-50		Gray EPDM	12" (304mm)	50' (15m)
	LF067G18-12		Gray EPDM	18" (457mm)	12' (3.6m)
	LF067G18-33		Gray EPDM	18" (457mm)	33' (10m)
	LF067G18-50		Gray EPDM	18" (457mm)	50' (15m)

**Stretchable  
Linear Flash (SLF)  
Master Flash®**



	Name	Part #	Compound	Width	Length
Stretchable Linear Flash	SLF067G11-12		Gray EPDM	11" (279mm)	12' (3.6m)
	SLF067G11-33		Gray EPDM	11" (279mm)	33' (10m)

# Master Flash® Part Number Key & Product Information

## Residential (Aluminum Base) Master Flash®



	Name	Part #	Compound	Pipe Range	Base
Mini		RS051BA	Black EPDM	1/4" - 3" (6 - 76mm)	16"X19-1/4" (410X490mm)
		RS051GA	Gray EPDM	1/4" - 3" (6 - 76mm)	16"X19-1/4" (410X490mm)
		RS052RA	Red Silicone	1/4" - 3" (6 - 76mm)	16"X19-1/4" (410X490mm)
		RS052GX	Gray Silicone	1/4" - 3" (6 - 76mm)	16"X19-1/4" (410X490mm)
#1		RS101BA	Black EPDM	3" - 8" (76 - 203mm)	20"X24" (508X609mm)
		RS101GA	Gray EPDM	3" - 8" (76 - 203mm)	20"X24" (508X609mm)
		RS102RA	Red Silicone	3" - 8" (76 - 203mm)	20"X24" (508X609mm)
		RS102GX	Gray Silicone	3" - 8" (76 - 203mm)	20"X24" (508X609mm)
#2		RS201BA	Black EPDM	8" - 11" (203 - 279mm)	26"X30" (660X7629mm)
		RS201GA	Gray EPDM	8" - 11" (203 - 279mm)	26"X30" (660X7629mm)
		RS202RA	Red Silicone	8" - 11" (203 - 279mm)	26"X30" (660X7629mm)
		RS202GX	Gray Silicone	8" - 11" (203 - 279mm)	26"X30" (660X7629mm)
#3		RS301BA	Black EPDM	11" - 18" (279 - 457mm)	35"X35" (889X7889mm)
		RS301GA	Gray EPDM	11" - 18" (279 - 457mm)	35"X35" (889X7889mm)
		RS302RA	Red Silicone	11" - 18" (279 - 457mm)	35"X35" (889X7889mm)
		RS302GX	Gray Silicone	11" - 18" (279 - 457mm)	35"X35" (889X7889mm)

## Res-Lead (Lead Base) Master Flash®



	Name	Part #	Compound	Pipe Range	Base
Mini		RL051BA	Black EPDM	1/4" - 3" (6 - 76mm)	16"X19-1/4" (410X490mm)
		RS051GA	Gray EPDM	1/4" - 3" (6 - 76mm)	16"X19-1/4" (410X490mm)
		RS052RA	Red Silicone	1/4" - 3" (6 - 76mm)	16"X19-1/4" (410X490mm)
#1		RS101BA	Black EPDM	3" - 8" (76 - 203mm)	20"X24" (508X609mm)
		RS101GA	Gray EPDM	3" - 8" (76 - 203mm)	20"X24" (508X609mm)
		RS102RA	Red Silicone	3" - 8" (76 - 203mm)	20"X24" (508X609mm)
#2		RS201BA	Black EPDM	8" - 11" (203 - 279mm)	26"X30" (660X7629mm)
		RS201GA	Gray EPDM	8" - 11" (203 - 279mm)	26"X30" (660X7629mm)
		RS202RA	Red Silicone	8" - 11" (203 - 279mm)	26"X30" (660X7629mm)
#3		RS301BA	Black EPDM	11" - 18" (279 - 457mm)	35"X35" (889X7889mm)
		RS301GA	Gray EPDM	11" - 18" (279 - 457mm)	35"X35" (889X7889mm)
		RS302RA	Red Silicone	11" - 18" (279 - 457mm)	35"X35" (889X7889mm)

## Middy Master Flash®



	Name	Part #	Compound	Pipe Range	Port	Base
Middy		SQ081BA	Black EPDM	0" - 2" (0 - 50mm)	1/8" - 3/8" (3 - 9.6mm)	3-3/4" (95mm)
		SQ081GA	Gray EPDM	0" - 2" (0 - 50mm)	1/8" - 3/8" (3 - 9.6mm)	3-3/4" (95mm)
		SQ082RA	Gray Silicone	0" - 2" (0 - 50mm)	1/8" - 3/8" (3 - 9.6mm)	3-3/4" (95mm)

# Master Flash® Part Number Key & Product Information



Name	Part #	Compound	Height	Inner Depth	Base
Mini	MC051BA	Black EPDM	3/4"(19mm)	2"(50mm)	2-3/4"WX3"L (69WX76Lmm)
	MC051GA	Gray EPDM	3/4"(19mm)	2"(50mm)	2-3/4"WX3"L (69WX76Lmm)
	MC051NG	Dark Gray EPDM	3/4"(19mm)	2"(50mm)	2-3/4"WX3"L (69WX76Lmm)
#1	MC101BA	Black EPDM	3"(76mm)	2"(50mm)	4-1/4"WX3"L (107WX76Lmm)
	MC101GA	Gray EPDM	3"(76mm)	2"(50mm)	4-1/4"WX3"L (107WX76Lmm)
	MC101NG	Dark Gray EPDM	3"(76mm)	2"(50mm)	4-1/4"WX3"L (107WX76Lmm)
#2	MC201BA	Black EPDM	3-1/4"(82mm)	4-1/4"(107mm)	5-3/4"WX7-1/4"L (146WX184Lmm)
	MC201NG	Dark Gray EPDM	3-1/4"(82mm)	4-1/4"(107mm)	5-3/4"WX7-1/4"L (146WX184Lmm)

## Solar Multi Port-AL (Aluminum Base) Master Flash®



Name	Part #	Compound	Pipe Range	Port	Port	Base
Multi Port-AL	SMP-RS101BA	Black EPDM	0" - 1-15/16" (0 - 49mm)	3/8" (9mm)	3/4" (20mm)	17-3/4"X24" (450x600mm)
	SMP-RS102RA	Red Silicone	0" - 1-15/16" (0 - 49mm)	3/8" (9mm)	3/4" (20mm)	17-3/4"X24" (450x600mm)

## Solar Multi Port-LD (Lead Base) Master Flash®



Name	Part #	Compound	Pipe Range	Port	Port	Base
Multi Port-LD	SMP-RL101BA	Black EPDM	0" - 1-15/16" (0 - 49mm)	3/8" (9mm)	3/4" (20mm)	16"X19-1/4" (410x490mm)
	SMP-RL102RA	Red Silicone	0" - 1-15/16" (0 - 49mm)	3/8" (9mm)	3/4" (20mm)	16"X19-1/4" (410x490mm)

## Metal Roof Vent Sealing Adapter (RVA) Master Flash®



Name	Part #	Compound	Opening	Height	Base
Metal Roof Vent Sealing Adapter	RVA101BA	Black EPDM	11-3/4" X11-3/4"(298X298mm)	1/4" (6mm)	24" (609mm)
	RVA101GA	Gray EPDM	11-3/4" X11-3/4"(298X298mm)	1/4" (6mm)	24" (609mm)
	RVA101NG	Dark Gray EPDM	11-3/4" X11-3/4"(298X298mm)	1/4" (6mm)	24" (609mm)

## Metal Roof Vent Sealing Adapter (RVA) Master Flash®



Name	Part #	Compound	Closed Top	Height	Base
Metal Roof Vent Sealing Adapter Multi-Flash	RVA101BA-MF	Black EPDM	Square or Rectangle 4"-12" (101- 355mm)	1/4" (6mm)	24" (609mm)
	RVA101GA-MF	Gray EPDM	Square or Rectangle 4"-12" (101- 355mm)	1/4" (6mm)	24" (609mm)
	RVA101NG-MF	Dark Gray EPDM	Square or Rectangle 4"-12" (101- 355mm)	1/4" (6mm)	24" (609mm)

## Master Flash® Part Number Key & Product Information

PART NUMBER KEY			Color Options			SILICONE PART NUMBER KEY			Silicone Color Options			
Base	Size	Color				Base	Size	Color				
LP	101	BA	BN-Brown	DG-Dark Gray	GG-Gray	LP	102	WT	WT-Red FDA White Silicone			
			BA-Black	WT-White	NG-Dark Green							
			LG-Light Green	DB-Dark Blue	LB-Light Blue							
			BR-Bright Red	TC-Terra Cotta								
			CP-Copper	TN-Tan								
LP 101 BA						LP 102 WT						
BN-Brown	BA-Black	NG-Dark Gray	GA-Gray	WT-White	DG-Dark Green	LG-Light Green	DB-Dark Blue	LB-Light Blue	BR-Bright Red	TC-Terra Cotta	CP-Copper	TN-Tan

### Low-Profile Master Flash®



Name	Part #	Compound	Pipe Range	Height	Base
Low-Profile	LP101BA	Black EPDM	0" - 4" (0- 101mm)	5/16" (8mm)	6-1/4" (158mm)

PART NUMBER KEY				Color Options			SILICONE PART NUMBER KEY			Silicone Color Options		
Base	Size	Color	Gripper				Base	Size	Color			
LP	101	BA	G	BA-Black	BN-Brown	GG-Gray	LP	102	WT	WT-Red FDA White Silicone		
				DG-Dark Gray	WT-White	NG-Dark Green						
				LG-Light Green	DB-Dark Blue	LB-Light Blue						
				BR-Bright Red	TC-Terra Cotta							
				CP-Copper	TN-Tan							
LP 101 BA-G							LP 102 WT					
BN-Brown	BA-Black	NG-Dark Gray	GA-Gray	WT-White	DG-Dark Green	LG-Light Green	DB-Dark Blue	LB-Light Blue	BR-Bright Red	TC-Terra Cotta	CP-Copper	TN-Tan

### Low-Profile Multi-Flash Master Flash®



Name	Part #	Compound	Pipe Range	Height	Base
Low-Profile	LP101BA-G	Black EPDM	0" - 4" (0- 101mm)	5/16" (8mm)	6-1/4" (158mm)

### Master Flash® Metal Roof Sealing Tape



Name	Part #	Color	Compound	Width	Length
Metal Roof Sealing Tape 2"	MRT2X50-BA	Black	Synthetic Resins, Thermoplastics and Non-Curing Rubber	2" (50mm)	50' (1m)
	MRT2X50-GA	Gray	Synthetic Resins, Thermoplastics and Non-Curing Rubber	2" (50mm)	50' (1m)
	MRT2X50-WT	White	Synthetic Resins, Thermoplastics and Non-Curing Rubber	2" (50mm)	50' (1m)
	MRT2X50-TN	Tan	Synthetic Resins, Thermoplastics and Non-Curing Rubber	2" (50mm)	50' (1m)
Metal Roof Sealing Tape 4"	MRT4X50-BA	Black	Synthetic Resins, Thermoplastics and Non-Curing Rubber	4" (101mm)	50' (1m)
	MRT4X50-GA	Gray	Synthetic Resins, Thermoplastics and Non-Curing Rubber	4" (101mm)	50' (1m)
	MRT4X50-WT	White	Synthetic Resins, Thermoplastics and Non-Curing Rubber	4" (101mm)	50' (1m)
	MRT4X50-TN	Tan	Synthetic Resins, Thermoplastics and Non-Curing Rubber	4" (101mm)	50' (1m)
Metal Roof Sealing Tape 6"	MRT6X50-BA	Black	Synthetic Resins, Thermoplastics and Non-Curing Rubber	6" (152mm)	50' (1m)
	MRT6X50-GA	Gray	Synthetic Resins, Thermoplastics and Non-Curing Rubber	6" (152mm)	50' (1m)
	MRT6X50-WT	White	Synthetic Resins, Thermoplastics and Non-Curing Rubber	6" (152mm)	50' (1m)
	MRT6X50-TN	Tan	Synthetic Resins, Thermoplastics and Non-Curing Rubber	6" (152mm)	50' (1m)
Metal Roof Sealing Tape 9"	MRT9X50-BA	Black	Synthetic Resins, Thermoplastics and Non-Curing Rubber	9" (228mm)	50' (1m)
	MRT9X50-GA	Gray	Synthetic Resins, Thermoplastics and Non-Curing Rubber	9" (228mm)	50' (1m)
	MRT9X50-WT	White	Synthetic Resins, Thermoplastics and Non-Curing Rubber	9" (228mm)	50' (1m)
	MRT9X50-TN	Tan	Synthetic Resins, Thermoplastics and Non-Curing Rubber	9" (228mm)	50' (1m)





# Master Flash® Part Number Key & Product Information

## Master Seal® PVC PVC Connectors



Name	Part #	Compound	Pipe Size
PVC PVC Connectors	MSC0707PVC	Black EPDM	3/4" X 3/4" PVC-PVC Connector
	MSC1010PVC	Black EPDM	1" X 1" PVC-PVC Connector
	MSC1212PVC	Black EPDM	1-1/4" X 1-1/4" PVC-PVC Connector
	MSC1515PVC	Black EPDM	1-1/2" X 1-1/2" PVC-PVC Connector
	MSC2020PVC	Black EPDM	2" X 2" PVC-PVC Connector
	MSC3030PVC	Black EPDM	3" X 3" PVC-PVC Connector
	MSC4040PVC	Black EPDM	4" X 4" PVC-PVC Connector
	MSC5050PVC	Black EPDM	5" X 5" PVC-PVC Connector
	MSC6060PVC	Black EPDM	6" X 6" PVC-PVC Connector
MSC8080PVC	Black EPDM	8" X 8" PVC-PVC Connector	

## Master Seal® PVC Reducers



Name	Part #	Compound	Pipe Size
PVC Reducers	MSR2015PVC	Black EPDM	2" X 1-1/2" PVC Reducer
	MSR3020PVC	Black EPDM	3" X 2" PVC Reducer
	MSR4030PVC	Black EPDM	4" X 3" PVC Reducer