

## Circular Duct Fan prioAir

A clear statement to the energy efficiency



# Efficient, compact, low-noise

prio**Air**

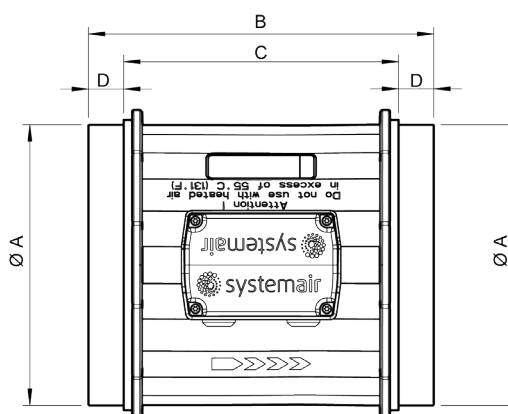
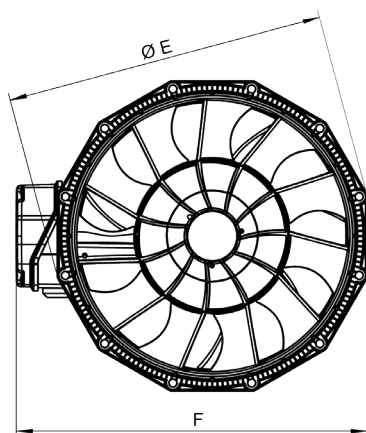


Convincing: Peak values in all disciplines

## The most important advantages at a glance

- Lowest SFP value and very high efficiency: both for EC and AC fans.  
Your advantage: Maximum performance and low energy consumption
- Powerful EC motor with integrated electronics. 100% controllable via 0-10V signal.  
Your advantage: Reduced energy consumption reduces the running costs
- prio**Air** with EC and AC motor
- Compact design.  
Your advantage: Less space required, a real inline fan
- Material: Special composite material.  
Your advantage: Lower weight, quick and easy installation
- Low-noise
- Long life
- Housing compliant with leak tightness class C, according to EN12237:2003

## Dimensions



prio	ØA	B	C	D	ØE	F
150E2/EC	149	412	312	40	187	211
160E2/EC	159	220	170	25	182	211
200E2/EC	199	245	195	25	227	249
250E2/EC	249	300	240	30	284.4	303

Dimensions in mm.

How do you achieve the best efficiency in your class?  
By re-inventing the wheel.

Maximum performance – minimum consumption:  
Not a contradiction in terms for the prio**Air** circular duct fan.

Because with its revolutionary impeller with fully optimised flow technology it can move enormous volumes of air with low energy input.

Moreover, it convinces with its compact dimensions and quiet performance.  
In short: The new standard for contemporary ventilation systems.

prio**Air**. **Lengths ahead.**



Clever: The optimised shape of the impeller enables an ideal air stream.

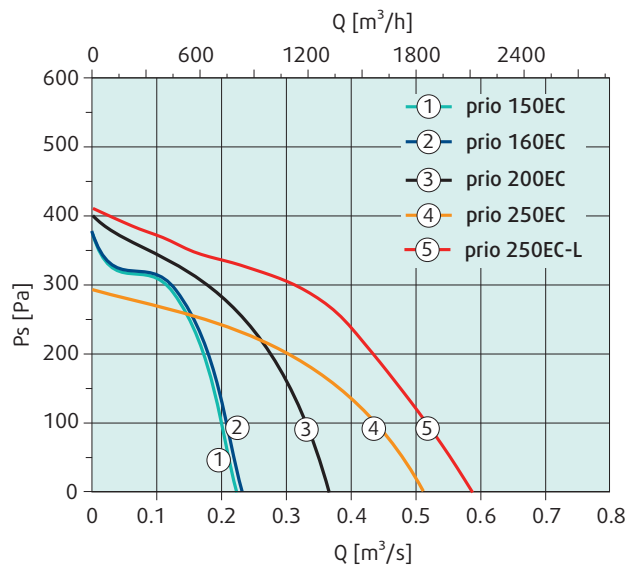
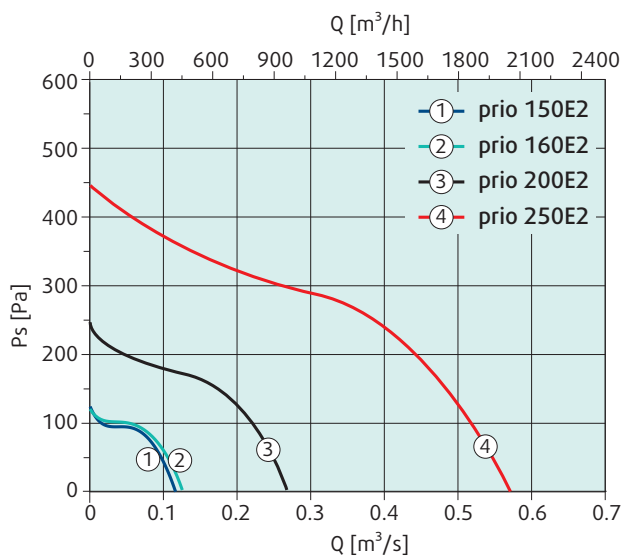


## Technical data

prio		150E2	150EC	160E2	160EC
Art.-no.		37355	37356	36916	36917
Voltage	V	230	230	230	230
Voltage	Hz	50 / 60	50 / 60	50 / 60	50 / 60
Phase	~	1	1	1	1
Power	W	27 / 31	76	27 / 30	77
Current	A	0,12 / 0,13	0,64	0,12 / 0,13	0,66
Max. airflow	m <sup>3</sup> /h	439 / 489	795	436 / 486	806
Fan impeller speed	1/min	2403 / 2622	4330	2450 / 2730	4320
Max. temperature of transported air	°C	55	55	55	55
Sound pressure level at 3 m (20 m <sup>2</sup> Sabine)	dB(A)	31 / 32	47	31 / 32	47
Weight	kg	1,7	1,9	1,4	1,6
Insulation class, motor		B	B	B	B
Enclosure class, motor	IP	44	44	44	44
Capacitor	µF	0,7	-	0,7	-

prio		200E2	200EC	250E2	250EC	250EC-L
Art.-no.		36381	36380	38333	38331	38332
Voltage	V	230	230	230	230	230
Voltage	Hz	50 / 60	50 / 60	50 / 60	50 / 60	50 / 60
Phase	~	1	1	1	1	1
Power	W	72 / 94	117	200	120	165
Current	A	0.33 / 0.41	0.92	0.9	0.90	1.35
Max. airflow	m <sup>3</sup> /h	947 / 1066	1332	2038	1822	2077
Fan impeller speed	1/min	2563 / 2782	3463	2660	2400	2650
Max. temperature of transported air	°C	55	55	55	55	55
Sound pressure level at 3 m (20 m <sup>2</sup> Sabine)	dB(A)	44 / 50	50	48	46	50
Weight	kg	3.1	2.4	4.6	2.9	3.0
Insulation class, motor		B	B	B	B	B
Enclosure class, motor	IP	44	44	44	44	44
Capacitor	µF	1.5	-	6	-	-

## Performance data



## The most important points for intelligent, effective and energy-efficient ventilation

- **Low-energy consumption**

The lower the SFP value (specific fan power), the less electrical energy is required to move one cubic metre of air.

- **Reduced resistance**

A clever, well-thought-out air guidance system prevents unnecessary resistances due to e.g. moulded parts, add-on parts or leaks.

- **Flexible demands**

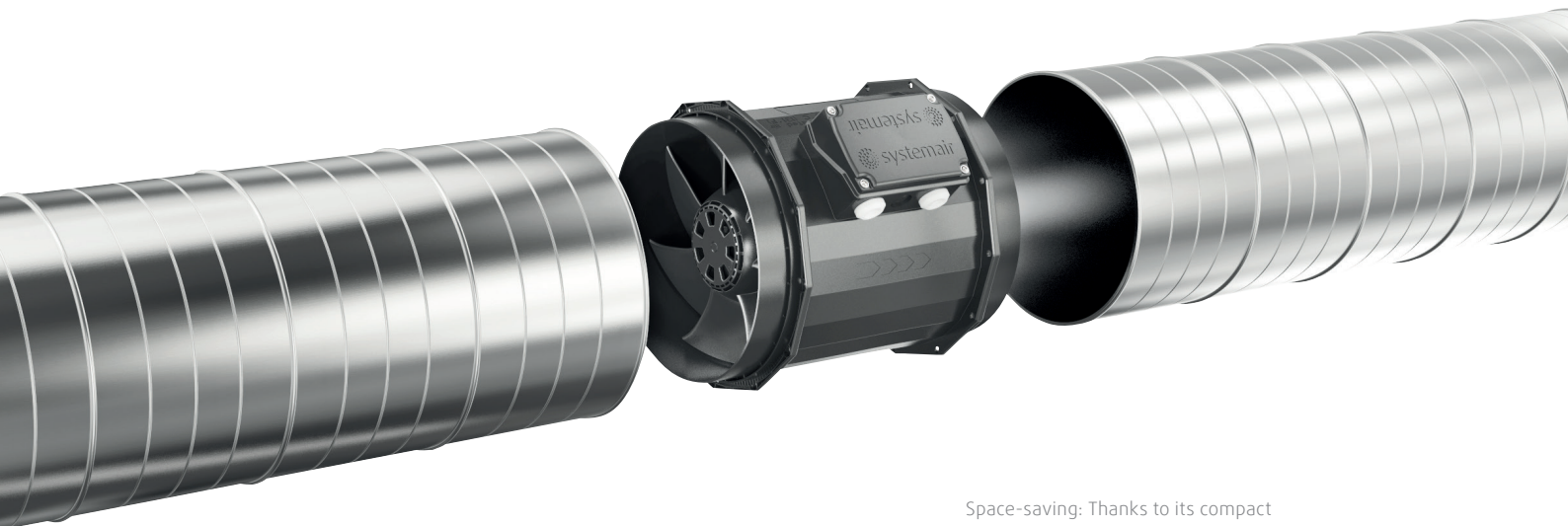
Require a variable volumetric flow and an adjustable drive.

- **Demand-dependent operation via smart controller**

The power can be adjusted at any time. No operation without a detectable target or benefit.

- **Efficient and intelligent**

All fan components lie in the range of optimum efficiency. Motor with intelligent electronics in the direct drive.



Space-saving: Thanks to its compact dimensions the circular duct fan matches the duct dimensions. A real inline solution.

## Electrical Accessories



**EC-Vent**  
Room unit with control box



**EC-Basic**  
All versions



**CXE/AV**  
Isolator



**MTV 1/010 / MTP 10**  
Speed controller



**REE**  
Thyristor speed controller



**RE/REU**  
Manual five-step transformer

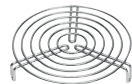


**REV**  
REV-Isolator  
ON / OFF

## Accessories



**IGC-LI/IGK**  
Intake grid,  
round and square



**SG**  
Protection guard



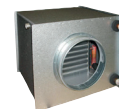
**VK**  
Gravity louvre shutter



**VKK**  
Back draft damper



**FK**  
Fast clamps



**CWK**  
Water cooling battery



**CB**  
Electrical duct heater



**VBF**  
Water heating battery



**FGR/FFR**  
Filter cassette



**prio**  
Mounting bracket



**RSK**  
Back draft damper



**LDC**  
Silencer





**Lengths ahead – the new prioAir.**  
Best Specific Fan Power.



