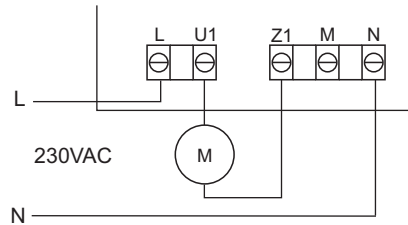
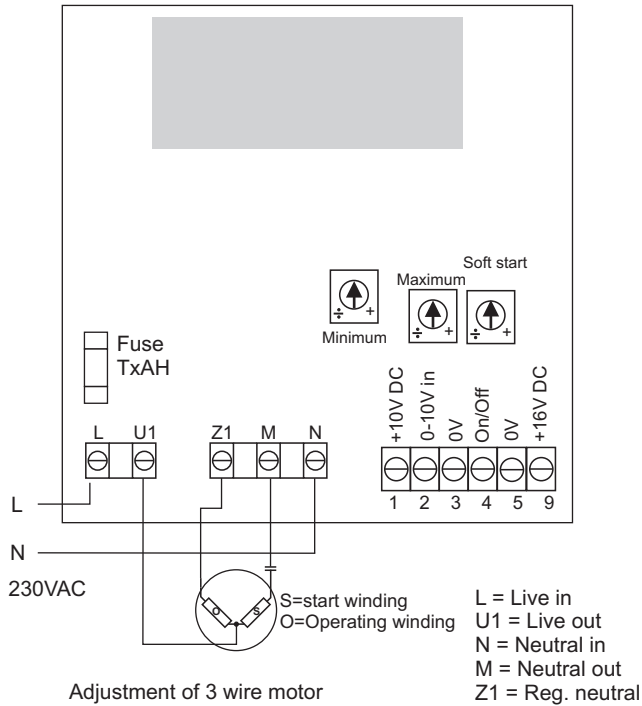


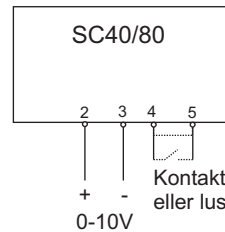
SpeedControl 40 / 80 E/ED

TRIAC controller 4A or 8 A

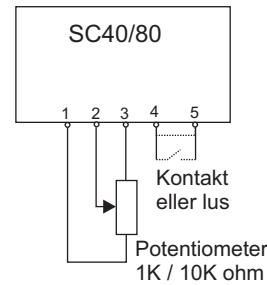


Example of connection to 2 wire motor or lamp

0-10V signal connection



Potentiometer connection



Technical data

Supply:	230V AC, 50Hz, max. 13A
Load:	4A or 8A (dep. on model)
Dimensions 4A (HxWxD):	200 x 120 x 75 mm
Dimensions 8A (HxWxD):	240 x 120 x 100 mm
Control signal input:	0-10V DC, min. 0,1mA
10V output load:	Max. 25 mA
16V output load:	Max 200 mA
Op. temperature:	0-50°C
IP Class:	Ip54

The control signal input is galvanic separated by double isolation.

Description

The SpeedControl unit is a triac controller for adjustment of fan motors, incandescent lamps or ironcore transformers. It is a so called leading edge controller adjusting the voltage to the motor.

The SC40/80 unit supplies a motor output voltage which is following a control signal of 0-10V DC or a potentiometer. It can also be controlled by e.g. a Z point potentiometer or a MultiController E (accessories).

Equipped with start stop input and an option for adjustment of max and min limits of the output voltage to the motor and soft start time.

Also equipped with voltage output for supply of external units.

Adjustment

Adjustment of min and max limits:

Turn MINIMUM and MAXIMUM trimmers to minus.

Adjust the control signal to minimum. Adjust the MINIMUM trimmer to the desired output voltage.

Adjust the control signal to maximum. Adjust the MAXIMUM trimmer to the desired output voltage. Do not turn it more than required, as that will reduce the active control range.

Soft start tid between 1 and 20 sec. to be set on the trimmer SOFTSTART.

Mounting

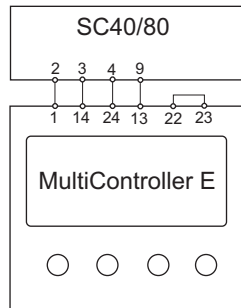
Sufficient cooling is to be provided especially at high ambient temperature. Holes may be drilled at the top and button of the box for air circulation.

NB! The IP class will change if holes are drilled in the box.

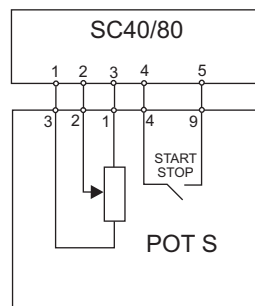


Accessories:

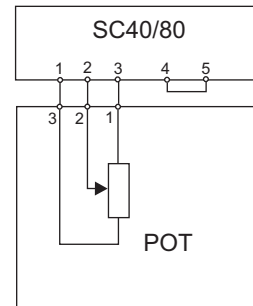
Connection to MultiController E



Connection to POT S potentiometer with switch



Connection to POT potentiometer without switch



Drawing:	950-205182_SpeedControl40-80-E-ED_ES937_UK
Rev.:	1.1
Date:	4/12-2014
Drawn by:	UP/KM/JEH
Manufactured by:	LS Control A/S

LSCONTROL