

MUB/F

The advantages are clear:
Flexible fire safety with the Multibox/F



Disclose the secret of fresh air!

Since 1974 Systemair cares for the purity of an essential resource. Today Systemair is one of the leading ventilation companies worldwide. A success story, which started in Skinnskatteberg, Sweden, with the invention of the inline duct fan. This invention revolutionised the ventilation world. Since then the company has continuously advanced and now offers a comprehensive range of products for all ventilation requirements. The experts of Systemair know the conditions and see the point whatever you need - the ventilation concept of a shopping centre, domestic ventilation of a single family house or the ventilation of tunnels and metro stations.

Over 2500 employees in more than 60 subsidiaries and 40 countries are available for the essential proximity to the customers.

This brochure presents our new smoke extract Multibox fan MUB/F. MUB/F is used in case of fire to extract smoke gases, and also during normal working conditions for standard ventilation.

For further information about our smoke extract fans and all the other Systemair products you can contact our experts in your local Systemair company or you can just visit our online catalogue on www.systemair.com.

Green Ventilation

Our label Green Ventilation marks all products according to Systemair's High Energy Efficiency Classification. All of these products combine cost effectiveness and energy efficiency.



Quality

Systemair has been certified according to ISO 9001, ISO 14001 and ATEX. Our R&D centre belongs to one of the most modern facilities in Europe. We test in compliance with the international standards EN, ISO and AMCA.



Skinnskatteberg, Sweden

- Systemair head office
- The main plant in Skinnskatteberg houses one of the company's distribution centers, the largest production facility and is the Systemair group head office.

Systemair AB, the Systemair group head office in Skinnskatteberg, Sweden. The production is virtually fully automated with modern machinery featuring advanced computer support. Also located here is the company's most advanced test installation for measuring technical data.

 **Hässleholm, Sweden**

• VEAB
VEAB is the leading European manufacturer of electric duct heaters. Production of heating and cooling coils, electric and water based.

 **Windischbuch, Germany**

Headquarter's of Systemair Germany and distribution center. Production facility for fans and modular air handling units, specialized on engineered products (e.g. tunnel and jet fans).

 **Dal, Eidsvoll, Norway**

Production of air handling units for the Norwegian market.

 **Hasselager, Denmark**

Production of air handling units.

 **Bratislava, Slovakia**

The factory in Bratislava manufactures air distribution products and EN certified fire and smoke dampers.

 **Maribor, Slovenia**

Specialized in centrifugal smoke extract fans, EN certified.

 **Kansas City, USA**

Production of fans for the US market.

 **Madrid, Spain**

Production of air handling units.

 **Ukmerge, Lithuania**

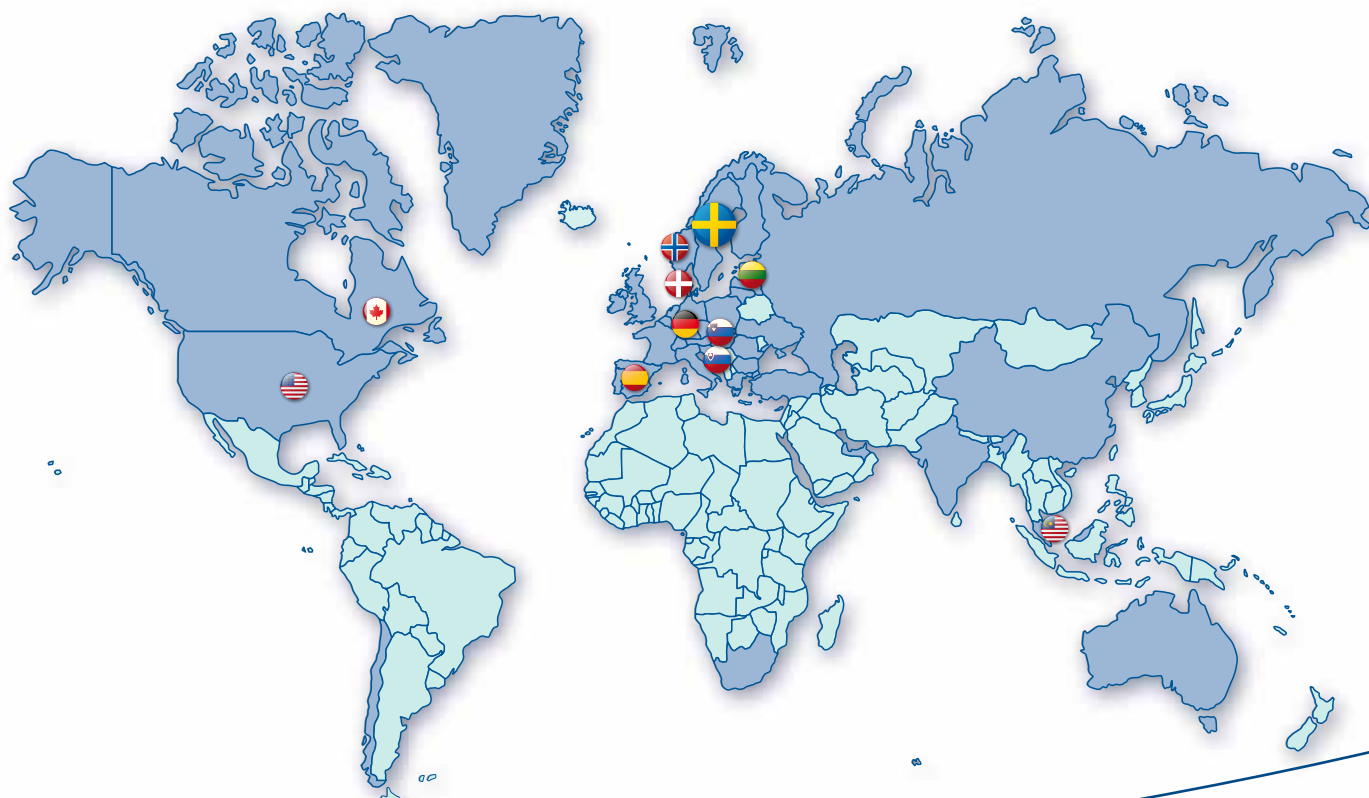
Production of smaller air handling units with energy recovery systems.

 **Kuala Lumpur, Malaysia**

Manufacturing of products for the Asian market.

 **Bouctouche, Canada**

Manufacturing of duct fans and heat exchangers used in residential ventilation for the North American market.



MUB/F

F400 - 400°C/120 Min.

Facts you can't ignore! Multibox/F adapts to your needs

The Systemair Smoke Extract Fan MUB/F adapts to the situation in your building rather than the reverse. This is a direct result of these units' **versatile installation and assembly variants**. They make it easy to integrate the Multibox/F into your plans and guarantee a simple and reliable installation.

The most flexible there is:

- Installation either inside or outside the fire zone without additional insulation
- Can be installed vertical or horizontal
- Suitable for indoor or outdoor installation
- Choice of exhaust direction; it can be modified on site
- Circular connection spigot is pre-installed as standard

Tested to EN 12101-3

The MUB/F has been tested by LGAI, Barcelona to ensure that it complies with the European product and testing standard EN 12101-3.



The complete range carries the CE mark in accordance with EN 12101-3:2002-06; continued compliance is monitored by TÜV Süd. The EU Declaration of Conformity is available for you to download from our online catalogue at www.systemair.de. DIBt approval has been applied for (status 02/11).

MUB/F – a New Generation of Smoke Extract Units

A Smoke Extract Fan from the MUB/F range is a duct ventilator which is capable of handling smoke gases at temperatures up to 400 °C, but it can also be used for everyday ventilation requirements at normal temperatures up to 55 °C.

The MUB/F is equipped with an impeller with backward curved blades and is manufactured from galvanized steel sheet. The casing consists of a frame, manufactured from steel profiles. The four sides are double-skin panels containing 20 mm thick high-quality mineral wool for sound and thermal insulation. Smooth surfaces help prevent build-ups of dust and dirt. The complete casing is made from galvanised steel sheet and is resistant to the effects of seawater.

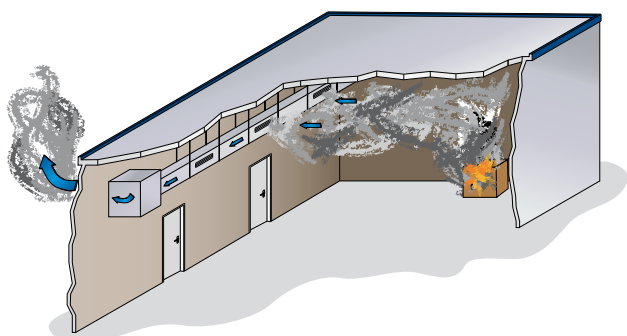
Changing the exhaust direction from straight to side exit is very simple. A circular connection spigot is pre-installed as standard. The entire range is equipped with motors suitable for high temperatures (400°C/120 min). There is a choice of single-speed or two-speed motors.



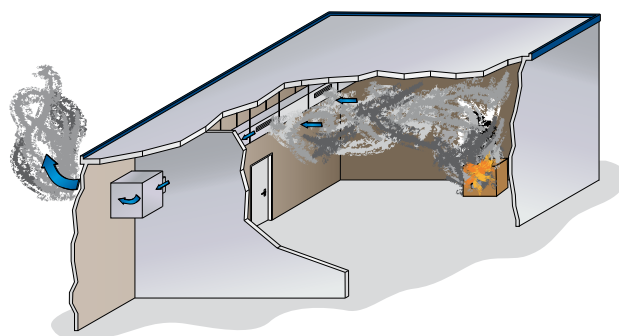
MUB/F:

A circular connection spigot is pre-installed as standard.

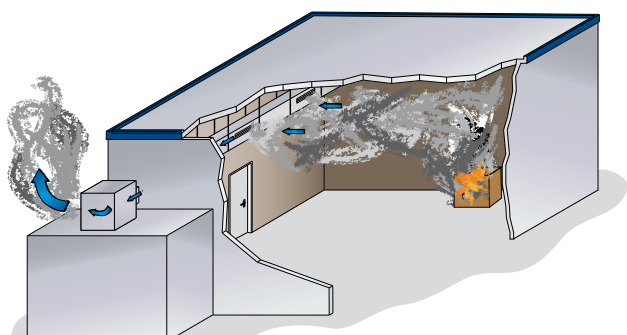
Adapts to the situation in your building rather than the reverse:
Multibox/F



Can be installed inside a fire zone



Can be installed outside a fire zone

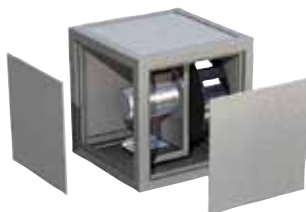


Can be installed outdoors

Change the exhaust direction on site
by simply changing the positions of the side panels!



Exhaust to the rear



Change the exhaust direction



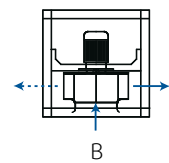
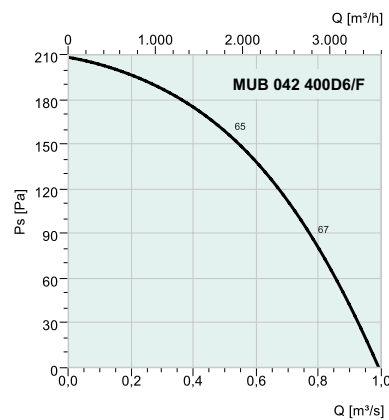
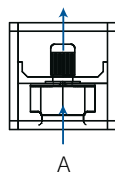
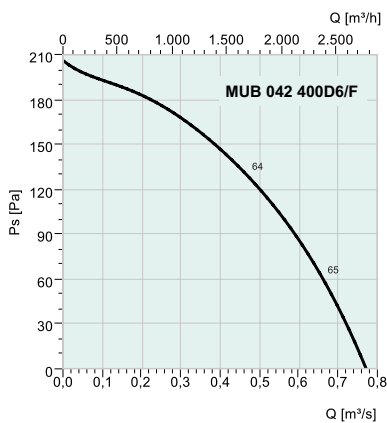
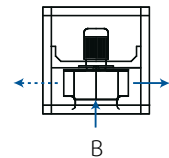
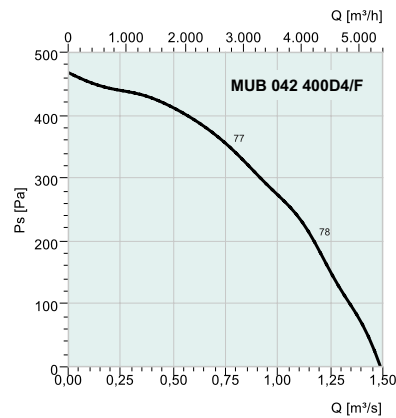
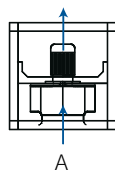
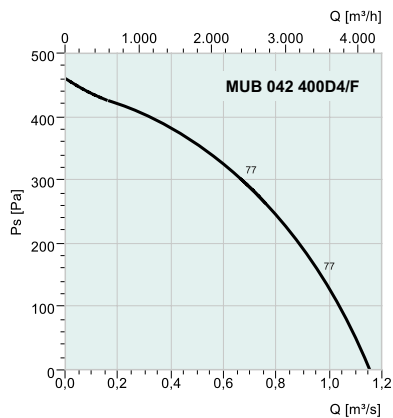
Exhaust to the side



MUB/F 042 400

| MUB 042 | | 400D4 | 400D6 | 400D4-6 |
|---|-------------------|-------------|-------------|-----------------------|
| Voltage/Frequency | V/50 Hz | 400 | 400 | 400 |
| Phase | ~ | 3 | 3 | 3 |
| Power at shaft (P2) | W | 550 | 370 | 550 / 180 |
| Current | A | 1,3 | 0,8 | 1,3 / 0,8 |
| Max. air flow A/B | m ³ /h | 4162 / 5360 | 2779 / 3571 | 4162/2779 / 5360/3571 |
| R.p.m. A/B | min ⁻¹ | 1465 / 1461 | 983 / 980 | 1465/983 / 1461/980 |
| Max. temp. of transported air | °C | 55 | 55 | 55 |
| Max. temp. of transported air at 120 min. | °C | 400 | 400 | 400 |
| Sound pressure level at 10 m A/B | dB(A) | 30,4 / 30,9 | 22,2 / 23,7 | 30,4/22,2 / 30,9/23,7 |
| Sound pressure level at 4 m A/B | dB(A) | 38,4 / 38,9 | 30,2 / 31,7 | 38,4/30,2 / 38,9/31,7 |
| Sound pressure level at 1 m A/B | dB(A) | 54,4 / 54,9 | 46,2 / 47,7 | 54,4/46,2 / 54,9/47,7 |
| Weight | kg | 98 | 98 | 105 |
| Insulation class, motor | | HC | HC | HC |
| Enclosure class, motor | | IP 55 | IP 55 | IP 55 |
| Speed control, Y/Y two step* | | - | - | S-DT2GKT |

* Speed control must be bypassed in case of a fire in accordance with the user manual!

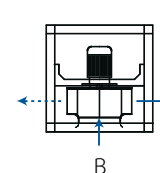
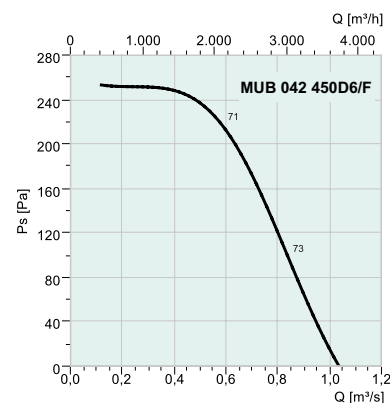
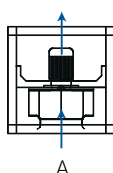
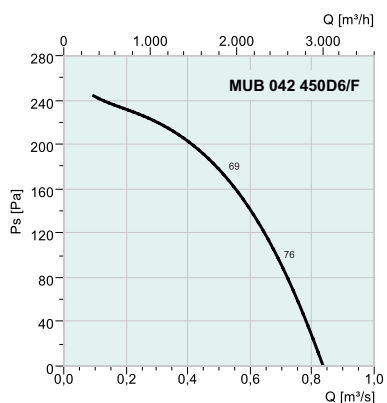
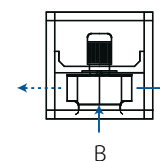
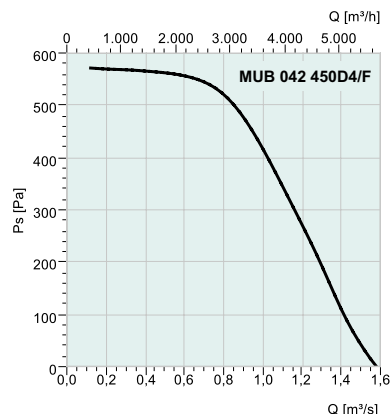
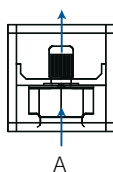
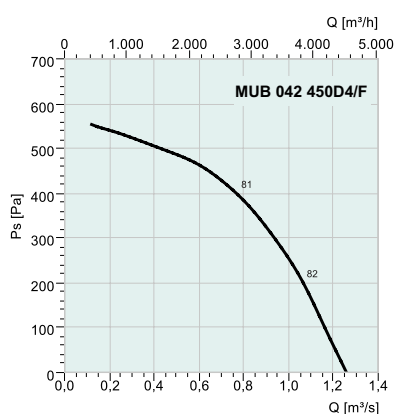


MUB/F 042 450



| MUB 042 | | 450D4 | 450D6 | 450D4-6 |
|--|-------------------|-------------|-------------|-----------------------|
| Voltage/Frequency | V/50 Hz | 400 | 400 | 400 |
| Phase | ~ | 3 | 3 | 3 |
| Power at shaft (P2) | W | 750 | 370 | 750 / 250 |
| Current | A | 1,6 | 0,9 | 1,6 / 0,9 |
| Max. air flow A/B | m ³ /h | 4532 / 5688 | 3010 / 3730 | 4532/3010 / 5688/3730 |
| R.p.m. A/B | min ⁻¹ | 1450 / 1446 | 972 / 971 | 1450/972 / 1446/971 |
| Max. temp. of transported air | °C | 55 | 55 | 55 |
| Max. temp. of transported air at 120 min. °C | | 400 | 400 | 400 |
| Sound pressure level at 10 m A/B | dB(A) | 33,7 / 33,2 | 21,4 / 25,3 | 33,7/21,4 / 33,2/25,3 |
| Sound pressure level at 4 m A/B | dB(A) | 41,7 / 41,2 | 29,4 / 33,3 | 41,7/29,4 / 41,2/33,3 |
| Sound pressure level at 1 m A/B | dB(A) | 57,7 / 57,2 | 54,4 / 49,3 | 57,7/54,4 / 57,2/49,3 |
| Weight | kg | 105 | 102 | 111 |
| Insulation class, motor | | HC | HC | HC |
| Enclosure class, motor | | IP 55 | IP 55 | IP 55 |
| Speed control, Y/Y two step* | | - | - | S-DT2GKT |

* Speed control must be bypassed in case of a fire in accordance with the user manual!

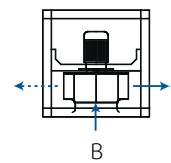
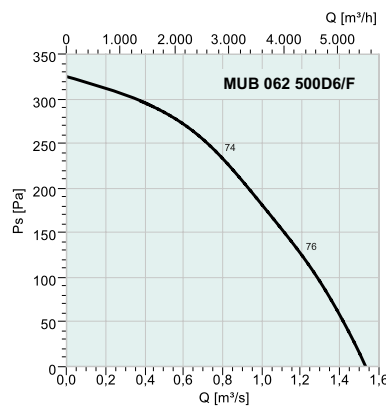
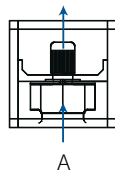
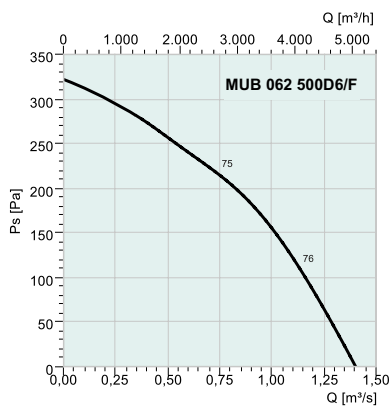
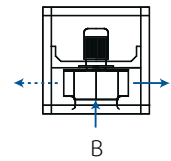
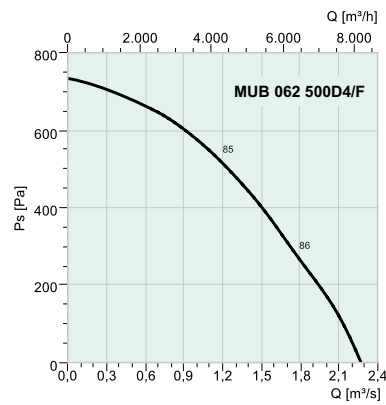
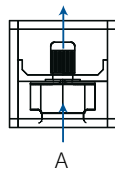
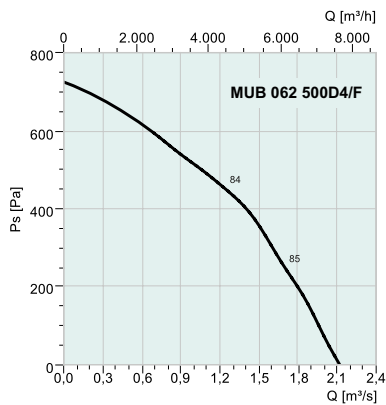




MUB/F 062 500

| MUB 062 | | 500D4 | 500D6 | 500D4-6 |
|---|-------------------|-------------|-------------|-----------------------|
| Voltage/Frequency | V/50 Hz | 400 | 400 | 400 |
| Phase | ~ | 3 | 3 | 3 |
| Power at shaft (P2) | W | 1500 | 750 | 1500 / 550 |
| Current | A | 3,32 | 1,76 | 3,32 / 1,76 |
| Max. air flow A/B | m ³ /h | 7636 / 8176 | 5051 / 5515 | 7636/5051 / 8176/5515 |
| R.p.m. A/B | min ⁻¹ | 1447 / 1440 | 965 / 967 | 1447/965 / 1440/967 |
| Max. temp. of transported air | °C | 55 | 55 | 55 |
| Max. temp. of transported air at 120 min. | °C | 400 | 400 | 400 |
| Sound pressure level at 10 m A/B | dB(A) | 42,1 / 42,0 | 31,0 / 30,9 | 42,1/21,0 / 52,0/30,9 |
| Sound pressure level at 4 m A/B | dB(A) | 50,1 / 50,0 | 39,0 / 38,9 | 50,1/39,0 / 50,0/30,9 |
| Sound pressure level at 1 m A/B | dB(A) | 66,1 / 66,0 | 55,0 / 54,9 | 66,1/55,0 / 66,0/54,9 |
| Weight | kg | 134 | 133 | 136 |
| Insulation class, motor | | HC | HC | HC |
| Enclosure class, motor | | IP 55 | IP 55 | IP 55 |
| Speed control, Y/Y two step* | | - | - | S-DT2GKT |

* Speed control must be bypassed in case of a fire in accordance with the user manual!

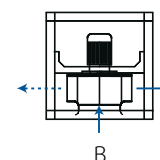
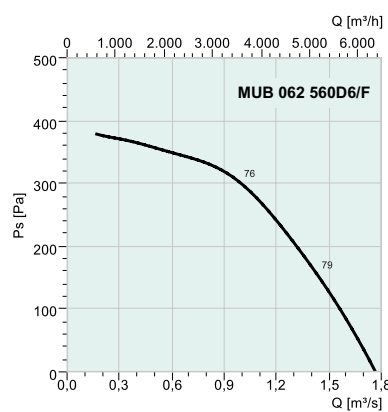
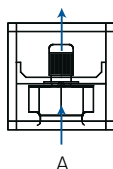
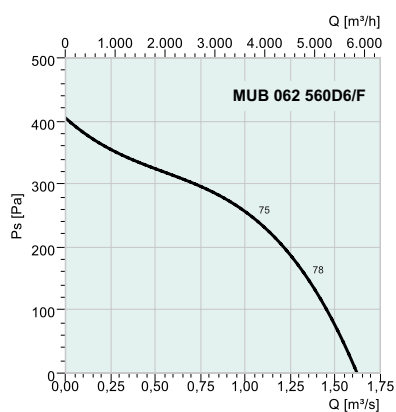
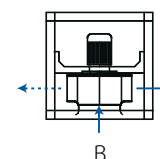
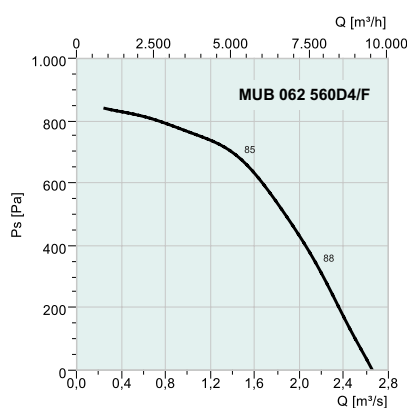
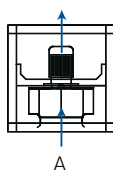
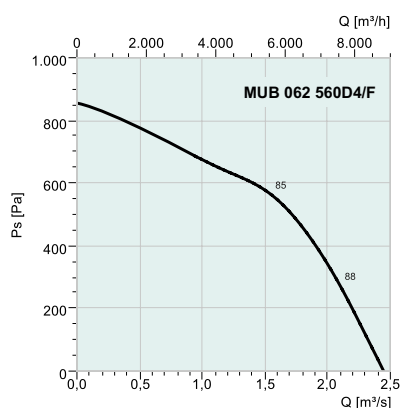


MUB/F 062 560



| MUB 062 | | 560D4 | 560D6 | 560D4-6 |
|---|-------------------|-------------|-------------|-----------------------|
| Voltage/Frequency | V/50 Hz | 400 | 400 | 400 |
| Phase | ~ | 3 | 3 | 3 |
| Power at shaft (P2) | W | 2200 | 750 | 2200 / 750 |
| Current | A | 4,6 | 2,5 | 4,6 / 2,5 |
| Max. air flow A/B | m ³ /h | 8809 / 9565 | 5897 / 6361 | 8809/5897 / 9565/6361 |
| R.p.m. A/B | min ⁻¹ | 1441 / 1440 | 969 / 972 | 1441/969 / 1440/972 |
| Max. temp. of transported air | °C | 55 | 55 | 55 |
| Max. temp. of transported air at 120 min. | °C | 400 | 400 | 400 |
| Sound pressure level at 10 m A/B | dB(A) | 44,8 / 44,8 | 33,7 / 33,9 | 44,8/33,7 / 44,8/33,9 |
| Sound pressure level at 4 m A/B | dB(A) | 52,8 / 52,8 | 41,7 / 41,9 | 52,8/41,7 / 52,8/41,9 |
| Sound pressure level at 1 m A/B | dB(A) | 68,8 / 68,8 | 57,7 / 87,9 | 68,8/57,7 / 68,8/57,9 |
| Weight | kg | 154 | 141 | 155 |
| Insulation class, motor | | HC | HC | HC |
| Enclosure class, motor | | IP 55 | IP 55 | IP 55 |
| Speed control, Y/Y two step* | | - | - | S-DT2GKT |

* Speed control must be bypassed in case of a fire in accordance with the user manual!

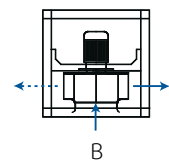
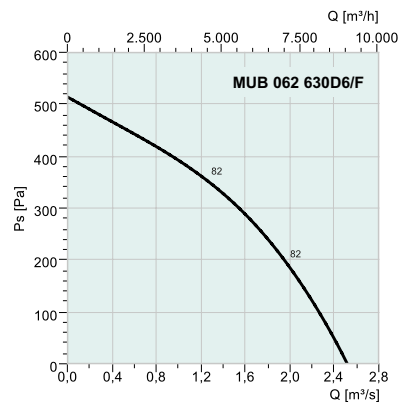
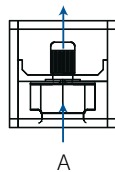
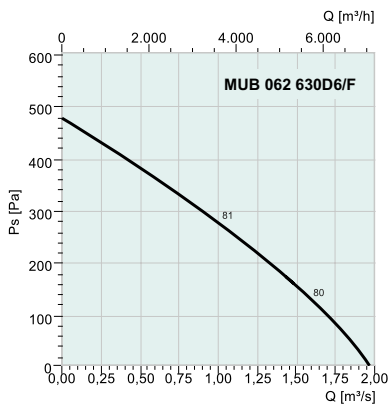
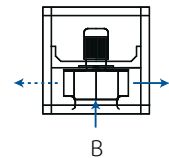
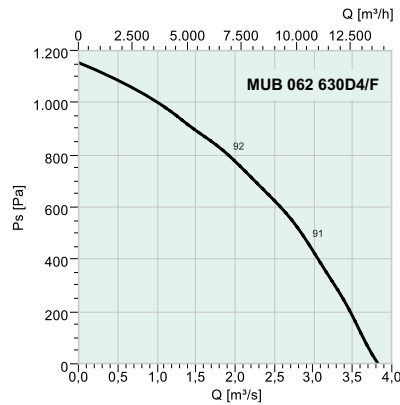
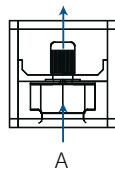
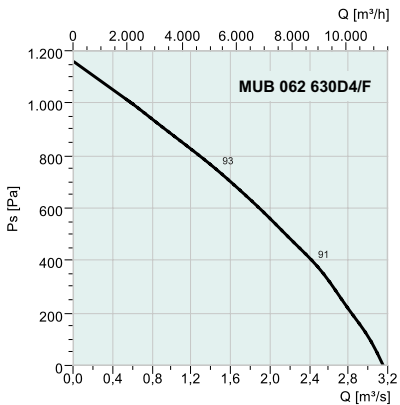




MUB/F 062 630

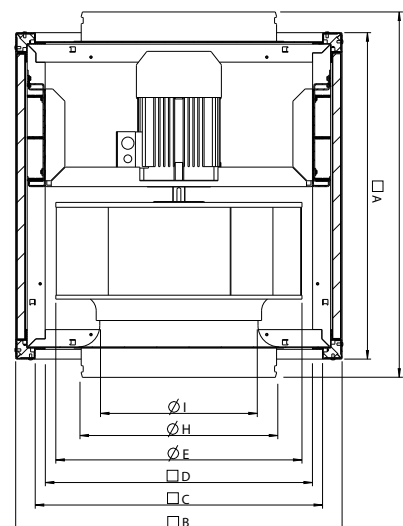
| MUB 062 | | 630D4 | 630D6 | 630D4-6 |
|---|-------------------|---------------|-------------|-------------------------|
| Voltage/Frequency | V/50 Hz | 400 | 400 | 400 |
| Phase | ~ | 3 | 3 | 3 |
| Power at shaft (P2) | W | 4000 | 1500 | 4000 / 1500 |
| Current | A | 8,6 | 4,0 | 8,6 / 4,0 |
| Max. air flow A/B | m ³ /h | 11354 / 13770 | 7106 / 9058 | 11354/7106 / 13770/9058 |
| R.p.m. A/B | min ⁻¹ | 1462 / 1459 | 980 / 979 | 1462/980 / 13770/9058 |
| Max. temp. of transported air | °C | 55 | 55 | 55 |
| Max. temp. of transported air at 120 min. | °C | 400 | 400 | 400 |
| Sound pressure level at 10 m A/B | dB(A) | 52,1 / 50,8 | 40,3 / 39,7 | 52,1/40,3 / 50,8/39,7 |
| Sound pressure level at 4 m A/B | dB(A) | 60,1 / 58,8 | 48,3 / 47,7 | 60,1/48,3 / 58,8/47,7 |
| Sound pressure level at 1 m A/B | dB(A) | 74,1 / 74,8 | 64,3 / 63,7 | 74,1/64,3 / 74,8/63,7 |
| Weight | kg | 163 | 158 | 190 |
| Insulation class, motor | | HC | HC | HC |
| Enclosure class, motor | | IP 55 | IP 55 | IP 55 |
| Speed control, Y/Y two step* | | - | - | S-DT2GKT |

* Speed control must be bypassed in case of a fire in accordance with the user manual!

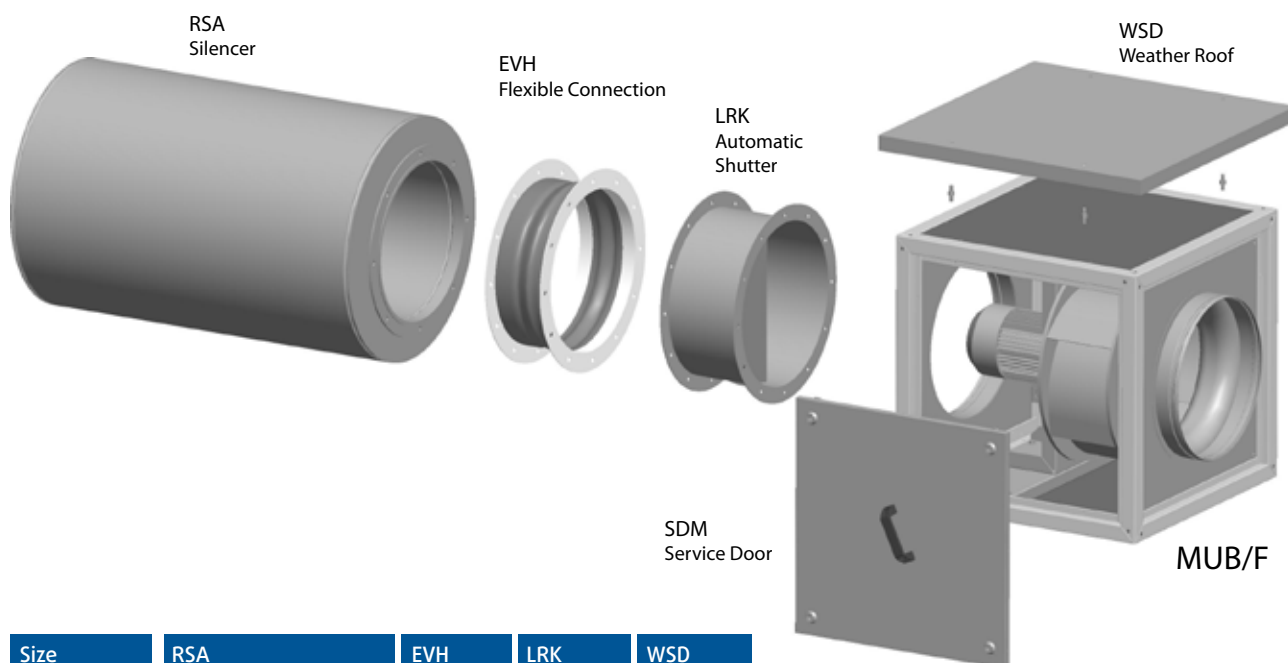


Dimensions

| Size | □A | □B | □C | □D | ∅E | ∅H | ∅I | J _{max.} |
|-------------|-----|-----|-----|-----|-----|-----|-----|-------------------|
| 042 400D4 | 670 | 670 | 590 | 548 | 410 | 400 | 289 | 783 |
| 042 400D6 | 670 | 670 | 590 | 548 | 410 | 400 | 289 | 783 |
| 042 400D4-6 | 670 | 670 | 590 | 548 | 410 | 400 | 289 | 783 |
| 042 450D4 | 670 | 670 | 590 | 548 | 454 | 400 | 289 | 783 |
| 042 450D6 | 670 | 670 | 590 | 548 | 454 | 400 | 289 | 783 |
| 042 450D4-6 | 670 | 670 | 590 | 548 | 454 | 400 | 289 | 783 |
| 062 500D4 | 800 | 800 | 720 | 676 | 520 | 560 | 364 | 915 |
| 062 500D6 | 800 | 800 | 720 | 676 | 520 | 560 | 364 | 915 |
| 062 500D4-6 | 800 | 800 | 720 | 676 | 520 | 560 | 364 | 915 |
| 062 560D4 | 800 | 800 | 720 | 676 | 570 | 560 | 364 | 915 |
| 062 560D6 | 800 | 800 | 720 | 676 | 570 | 560 | 364 | 915 |
| 062 560D4-6 | 800 | 800 | 720 | 676 | 570 | 560 | 364 | 915 |
| 062 630D4 | 800 | 800 | 720 | 676 | 650 | 630 | 456 | 915 |
| 062 630D6 | 800 | 800 | 720 | 676 | 650 | 630 | 456 | 915 |
| 062 630D4-6 | 800 | 800 | 720 | 676 | 650 | 630 | 456 | 915 |



Accessories



| Size | RSA | EVH | LRK | WSD |
|------------|---------------------|---------|---------|--------|
| MUB042 400 | RSA 400/1000/100(B) | EVH 400 | LRK 400 | WSD042 |
| MUB042 450 | RSA 450/1000/100(B) | EVH 400 | LRK 400 | WSD042 |
| MUB062 500 | RSA 560/1000/100(B) | EVH 560 | LRK 560 | WSD062 |
| MUB062 560 | RSA 560/1000/100(B) | EVH 560 | LRK 560 | WSD062 |
| MUB062 630 | RSA 630/1000/100(B) | EVH 630 | LRK 630 | WSD062 |

